

[オーケストラ]

Bassoon 1

ぎふ清流国体・ぎふ清流大会ソング

はばたけ、未来へ

作詞・作曲 古川 今

(補作詞 小島紀夫)

編曲 沢田 完

Intro-1

Allegro ♩ = 140

First staff of music for Intro-1, bass clef, key signature of one sharp (F#), common time. It begins with a *mf* dynamic and features a series of eighth notes with accents, transitioning to a *sf* dynamic.

頭C

First staff of music for 頭C, bass clef, key signature of one sharp (F#), common time. It starts with a *mf* dynamic and consists of eighth notes with accents.

Second staff of music for 頭C, bass clef, key signature of one sharp (F#), common time. It continues with eighth notes and accents, ending with a trill.

頭C'

First staff of music for 頭C', bass clef, key signature of one sharp (F#), common time. It begins with a *f* dynamic and features half notes with accents.

Second staff of music for 頭C', bass clef, key signature of one sharp (F#), common time. It continues with eighth notes and accents, ending with a *fp* dynamic.

Intro-2

First staff of music for Intro-2, bass clef, key signature of one sharp (F#), common time. It starts with a *f* dynamic and features quarter notes with accents.

Second staff of music for Intro-2, bass clef, key signature of one sharp (F#), common time. It continues with quarter notes and accents, ending with a *ff* dynamic.

Third staff of music for Intro-2, bass clef, key signature of one sharp (F#), common time. It features eighth notes with accents, transitioning to a *mp* dynamic.

1A

First staff of music for 1A, bass clef, key signature of one sharp (F#), common time. It begins with a *mf* dynamic and includes a triplet of eighth notes.

Bassoon 1

1A' *mp*

1B *mf*

f

1C 1C' *f*

f

Inter-1 *fp* *f*

ff

f

2A *mp*

Bassoon 1

2A'

mp sf mp mf

Musical notation for section 2A' in bass clef, key of D major. It begins with a series of eighth notes, followed by a dynamic change to sf. A box labeled '2A'' is placed above the first measure. The section continues with a melodic line that transitions from mp to mf.

mf mf 2

Musical notation for the continuation of section 2A'. It features a melodic line with a dynamic change to mf. A fermata with the number '2' is placed above the final measure.

2B

mf

Musical notation for section 2B in bass clef, key of D major. It starts with a long note, followed by a melodic line. A box labeled '2B' is placed above the first measure. The dynamic is marked as mf.

Musical notation for the continuation of section 2B, featuring a melodic line with various articulations.

2C

f sf 6

Musical notation for section 2C in bass clef, key of D major. It includes a sixteenth-note run marked with a '6' and a dynamic change to f. A box labeled '2C' is placed above the first measure. The section ends with a sixteenth-note run marked with a '6' and a dynamic change to sf.

2C'

Musical notation for section 2C' in bass clef, key of D major. It features a complex rhythmic pattern with many accents.

fp

Musical notation for the continuation of section 2C', ending with a dynamic change to fp.

Inter-2

f

Musical notation for section Inter-2 in bass clef, key of D major. It features a series of eighth notes with accents. A box labeled 'Inter-2' is placed above the first measure. The dynamic is marked as f.

3C

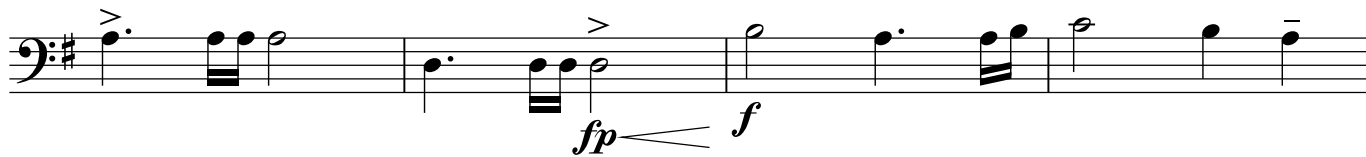
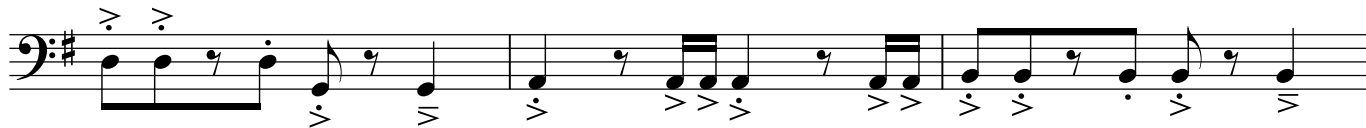
Musical notation for section 3C in bass clef, key of D major. It features a melodic line with accents.

sf 6

Musical notation for the continuation of section 3C, ending with a sixteenth-note run marked with a '6' and a dynamic change to sf.

Bassoon 1

3C'



Outro

